



CATALOG

Effective 11/25/2013



www.SteelMasterUSA.com
800-341-7007

Table of Contents

- 2 The SteelMaster Advantage
- 3 Terms & Conditions
- 5 Vehicle Storage
- 6 Mid-Sized Equipment Storage
- 7 Large Equipment Storage
- 8 Warehousing
- 9 Carports
- 14 Customer Service
- 15 Building Construction

www.SteelMasterUSA.com

800-341-7007



STEELMASTER
BUILDING SYSTEMS

The SteelMaster Advantage

At SteelMaster, we understand that every project is unique and that it is critical for our design specialists to listen closely to our customers' needs before we engineer the appropriate building solution. We bring many project professionals to every job in order to ensure your complete satisfaction with the entire process, from conception to final delivery.



SteelMaster Leadership Team

Dear Customer:

Welcome to SteelMaster's expanding Family.

SteelMaster Building's continues to raise the bar for shelter worldwide while carefully engineering a focused path through today's emerging global economy.

Partnering with the world's largest steel manufacturer, SteelMaster has excelled at solving even the most complex shelter challenges in a cost effective manner. We are passionate about providing practical building solutions for virtually every environment on planet earth.

We have successfully completed thousands of projects for the most demanding Architects and Engineers, Fortune 500 companies and every branch of the U.S. Armed Services.

Through our growing distributor network in over 50 countries, combined with the integrity and experience of our Management and Manufacturing Team, we stand ready to serve you in every corner of the globe with the highest quality products and service in the industry.

Our promise to you, our valued customer is to:

- partner with you to provide custom building solutions.
- provide the best quality products in the business.
- deliver unparalleled customer service.
- offer you the best value for your investment.

We will accomplish this by keeping your needs first, supported by our vast expertise. This is the SteelMaster promise.

We look forward to earning your business,

A handwritten signature in black ink, appearing to read "Rhae Adams Jr.", is written over a horizontal line.

Rhae Adams Jr.
President/CEO

1023 Laskin Road, Suite 109 • Virginia Beach, VA 23451
800-341-7007 • Fax: 757-422-0136

Terms & Conditions

GENERAL SERVICES ADMINISTRATION FEDERAL SUPPLY SERVICE AUTHORIZED FEDERAL SUPPLY SCHEDULE CATALOG/PRICE LIST

On-line access to contract ordering information, terms and conditions, up-to-date pricing, and the option to create an electronic delivery order are available through GSA Advantage!, a menu-driven database system. The INTERNET address for GSA Advantage! is: <http://www.gsaadvantage.gov>

Federal Supply Schedule 056 – Buildings and Building Materials/Industrial Services and Supplies FSC Group 54 (Preengineered/ Prefabricated Buildings and Structures), FSC Class 5410

Contract # GS-07F-0458T
For more information on ordering from Federal Supply Schedules click on the FSS Schedules button at <http://www.fss.gsa.gov>

Federal ID # 20-1654447
DUNS # 555569065
Cage Code: 8A2W4
Contract Period:
7/1/2013 - 6/30/2017

SteelMaster Buildings, LLC
1023 Laskin Rd, Ste. 109
Virginia Beach, VA 23451
Telephone: 757-422-6800
Toll Free: 800-341-7007
Fax: 757-422-0136

Website: www.steelmasterusa.com
E-mail: karen@steelmasterusa.com
Contract Administration Source: Karen Willis
Business Size: Small

CUSTOMER INFORMATION:

1a. Table of Awarded Special Item Numbers (SIN):
361-10A Pre-Engineered and Prefabricated Buildings for Storage Solutions

1b. Identification of the Lowest Price Item:
\$0.93 for – (1) Item # ACC80-A

Government price inclusive of IFF based on a unit of one, exclusive of any quantity/dollar volume, prompt payment, or any other concession affecting price.

1c. Hourly Rates: Not Applicable

2. Maximum Order: 361-10A = \$150,000.00
If the best value selection places your order over the Maximum Order identified in this catalog/pricelist, you have an opportunity to obtain a better schedule contract price. Before placing your order, contact the aforementioned contractor for a better price. The contractor may (1) offer a new price for this requirement; (2) offer the lowest price available under this contract; or (3) decline the order. A delivery order that exceeds the maximum order may be placed under the schedule contract in accordance with FAR 8.404.

3. Minimum Order: None

4. Geographic Coverage (delivery area):
Domestic delivery, 50 states, Washington DC, Puerto Rico, US Territories and to a CONUS port or consolidation point for orders received from overseas activities

5. Point(s) of Production (city, county, state):
Ontario, Canada

6. Discount From List Price: Prices shown are net prices; Basic Discounts have been deducted and the prevailing Industrial Funding Fee has been applied. (See attached GSA Price List).

7. Quantity Volume Discount(s):
Additional 1% for sales over \$5,001 to \$20,000;
Additional 2% at \$20,001 to \$50,000;
Additional 3% at \$50,001+

Terms & Conditions

8. Prompt Payment Terms: Net 30 days.
Information for Ordering Offices: Prompt payment terms cannot be negotiated out of the contractual agreement in exchange for other concessions.
- 9a. Government Purchase Card Acceptance Below Micro-purchase Threshold: Yes
- 9b. Government Purchase Card Acceptance Above Micro-purchase Threshold: Yes
10. Foreign Items (list by country of origin): All items are made in Canada
- 11a.-d. Time of Delivery: 56 days ARO
Expedited Delivery: 28 days ARO
Urgent Requirements: Agencies can contact the Contractor's representative to affect a faster delivery. Customers are encouraged to contact the contractor for the purpose of requesting accelerated delivery.
12. F.O.B. points(s): Origin - CONUS, Origin - AK, Origin - HI, Origin - PR
- 13a. Ordering Address:
SteelMaster Buildings, LLC
1023 Laskin Rd, Ste. 109
Virginia Beach, VA 23451
Fax: (757)-422-0136
- 13b. Ordering Procedures: Ordering activities shall use the ordering procedures described in Federal Acquisitions Regulations 8.405 when placing an order or establishing a BPA for supplies or services. The ordering procedures, information on Blanket Purchase Agreement's (BPA's) and a sample BPA can also be found at the GSA/FSS Schedule Homepage (fss.gsa.gov/schedules).
14. Payment Address: Same as ordering address
15. Warranty Provision: Standard Commercial Warranty applies. Customer should contact the contractor for a copy of the warranty.
16. Export Packaging Charges (if applicable): Not Applicable.
17. Terms and Conditions of Government Purchase Card Acceptance: The Government Purchase Card is accepted by the contractor for purchases of any size. (No additional discounts offered on order placed using credit card.)
18. Terms and conditions of rental, maintenance, and repair (if applicable): Not Applicable
19. Terms and conditions of installation, (if applicable): Not Applicable
20. Terms and conditions of repair parts indicating date of parts price lists and any discounts from list prices (if applicable): Not Applicable
- 20a. Terms and conditions for any other services (if applicable): Not Applicable
21. List of service and distribution points (if applicable): Not Applicable
22. List of participating dealers (if applicable): Not Applicable
23. Preventive maintenance (if applicable): Not Applicable
- 24a. Special Environmental Attributes: None
- 24b. Section 508 Compliance: Not Applicable
25. DUNS Number: 555569065
26. Notification regarding registration in System for Award Management (SAM) Database: Registration valid until 12/29/2017

STEELMASTER BUILDINGS, LLC GSA PRICING LIST

Note: Contact SteelMaster Buildings, LLC for specific configuration and option pricing.



www.SteelMasterUSA.com
800-341-7007

Vehicle Storage

The Vehicle Storage solution by SteelMaster is the perfect way to store your vehicles safe and securely. Our buildings unique design provides ultimate security and durability while remaining aesthetically pleasing to the environment.

The SteelMaster Vehicle Storage solution includes; arches for a 32' wide x 17' high x 40' length building and endwalls to create a solid back wall with your option of door framed opening on the front or back wall and a 48.5" wide x 79.5" high man door with lockset. This buildings foundation is supplied with our industry leading, industrial base plate connector.

Additional Volume Discount will be applied separately to each order:

| Total Price FOB Factory before IFF | Additional Volume Discount |
|---|---------------------------------------|
| \$5,001 - \$20,000 | 1% |
| \$20,001 - \$50,000 | 2% |
| \$50,001 + | 3% |

Note: Many other sizes/configurations and accessories are available. Contact us for details.

GSA PRICES

Prices reflect GSA basic discount plus IFF fee (0.75%) FOB Factory

| | APPROX. SIZE | INCLUDES |
|--|---------------------|---|
| Vehicle Storage Item: Pkg1-A \$16,766 | 32'w x 17'h x 40'l | Solid back wall, front wall with framed opening for any size door, industrial base plate connector, and 48.5" w x 79.5" h man door w/ lockset for 1 endwall |

Option: Add \$524 for each additional 2 foot of length needed
* Overhead and/or sliding doors (pictured) not included



www.SteelMasterUSA.com
800-341-7007



Mid-Sized Equipment Storage

When it comes to storing Mid-Sized to Large Scale Equipment, SteelMaster Buildings have been tested and proven, time and time again for over 30 years. No building can surpass the superior strength, versatility, and reputation of a SteelMaster Building. With its 100% usable space, you can store humvees, tractor-trailers, tanks, boats, or other valuable equipment. This multipurpose design helps keep operating costs down, preserves your valuable investments by keeping them properly stored.

The SteelMaster Mid-Sized Equipment Storage solution includes; arches for a 20' wide x 15' high x 32' length building and endwalls to create a solid back wall with your option of door framed opening on the front or back wall and a 48.5" wide x 79.5" high man door with lockset. This buildings foundation is supplied with our industry leading, industrial base plate connector.



Additional Volume Discount will be applied separately to each order:

| Total Price FOB Factory before IFF | Additional Volume Discount |
|---|---------------------------------------|
| \$5,001 - \$20,000 | 1% |
| \$20,001 - \$50,000 | 2% |
| \$50,001 + | 3% |

Note: Many other sizes/configurations and accessories are available. Contact us for details.

GSA PRICES

Prices reflect GSA basic discount plus IFF fee (0.75%) FOB Factory

APPROX. SIZE

INCLUDES

Medium Equipment Storage

| | | | |
|--------------|----------|--------------------|---|
| Item: Pkg2-A | \$11,688 | 20'w x 15'h x 32'l | Solid back wall, front wall with framed opening for any size door, industrial base plate connector, and 48.5"w x 79.5"h man door w/ lockset for 1 endwall |
|--------------|----------|--------------------|---|

Option: Add \$446 for each additional 2 foot of length needed

* Canister doors and vents (pictured) not included



Large Equipment Storage

The SteelMaster Large Equipment Storage solution includes; arches for a 30' wide x 17' high x 40' length building and endwalls to create a solid back wall with your option of door framed opening on the front or back wall and a 3' wide x 7' high man door with lockset. This buildings foundation is supplied with our industry leading, industrial base plate connector.

Additional Volume Discount will be applied separately to each order:

| Total Price FOB Factory before IFF | Additional Volume Discount |
|---|---------------------------------------|
| \$5,001 - \$20,000 | 1% |
| \$20,001 - \$50,000 | 2% |
| \$50,001 + | 3% |

Note: Many other sizes/configurations and accessories are available. Contact us for details.

GSA PRICES

Prices reflect GSA basic discount plus IFF fee (0.75%) FOB Factory

| | APPROX. SIZE | INCLUDES |
|--|---------------------|---|
| Large Equipment Storage Item: Pkg3-A \$16,738 | 30'w x 17'h x 40'l | Solid back wall, front wall with framed opening for any size door, industrial base plate connector, and 3'w x 7'h man door w/ lockset for 1 endwall |

Option: Add \$531 for each additional 2 foot of length needed.

* Overhead doors, vents and skylights (pictured) not included.



www.SteelMasterUSA.com
800-341-7007



Warehousing

When it comes to large warehouse solutions, a SteelMaster building is the perfect answer. No matter the warehousing need, whether it may be for cargo, port applications, hazardous materials, or container storage, a SteelMaster Building is safe, secure and provides your organization the ability to expand at anytime. We can provide you with an economical and virtually maintenance-free storage facility, offering 100% usable space. With a SteelMaster warehouse, you are only limited by the available square footage and your imagination.

The SteelMaster Warehousing Storage solution includes; arches for a 40' wide x 19' high x 50' length building and endwalls to create a solid back wall with your option of door framed opening on the front or back wall and a 3' wide x 7' high man door with lockset. This buildings foundation is supplied with our industry leading, industrial base plate connector.

Additional Volume Discount will be applied separately to each order:

| Total Price FOB Factory before IFF | Additional Volume Discount |
|---|---------------------------------------|
| \$5,001 - \$20,000 | 1% |
| \$20,001 - \$50,000 | 2% |
| \$50,001 + | 3% |

Note: Many other sizes/configurations and accessories are available. Contact us for details.



GSA PRICES

Prices reflect GSA basic discount plus IFF fee (0.75%) FOB Factory

APPROX. SIZE

INCLUDES

Warehousing

| | | | |
|--------------|----------|--------------------|---|
| Item: Pkg4-A | \$23,564 | 40'w x 19'h x 50'l | Solid back wall, front wall with framed opening for any size door, industrial base plate connector, and 3'w x 7'h man door w/ lockset for 1 endwall |
|--------------|----------|--------------------|---|

Option: Add \$620 for each additional 2 foot of length needed.

* Overhead doors, vents and skylights (pictured) not included.



Carports

SteelMaster Carports are built to withstand a variety of conditions and are designed to meet the wind ratings and snow loads of their location. Standard carport sizes range from 12' to 20' wide with other widths available. Steel Carports offer a variety of uses from vehicle storage, equipment cover, maintenance shelter and steel canopy.

All carports include heavy duty steel arch panels, trim angles, 14 gauge steel posts and beams, steel base clips and all required hardware excluding concrete anchor bolts.

Additional Volume Discount will be applied separately to each order:

| Total Price FOB Factory before IFF | Additional Volume Discount |
|---|---------------------------------------|
| \$5,001 - \$20,000 | 1% |
| \$20,001 - \$50,000 | 2% |
| \$50,001 + | 3% |

CARPORTS

GSA PRICES

Prices reflect GSA basic discount plus IFF fee (0.75%) FOB Factory

| ITEM NUMBER | PRICE | APPROX. SIZE |
|--------------------|--------------|---------------------|
| C12818L1-A | \$3,249 | 12'w x 8'h x 18'l |
| C12820L1-A | \$3,499 | 12'w x 8'h x 20'l |
| C12822L1-A | \$3,757 | 12'w x 8'h x 22'l |
| C12824L1-A | \$4,007 | 12'w x 8'h x 24'l |
| C12826L1-A | \$4,531 | 12'w x 8'h x 26'l |
| C12828L1-A | \$4,781 | 12'w x 8'h x 28'l |
| C12830L1-A | \$5,041 | 12'w x 8'h x 30'l |
| C12832L1-A | \$5,295 | 12'w x 8'h x 32'l |
| C12834L1-A | \$5,821 | 12'w x 8'h x 34'l |
| C12836L1-A | \$6,072 | 12'w x 8'h x 36'l |
| C12838L1-A | \$6,338 | 12'w x 8'h x 38'l |
| C12840L1-A | \$6,583 | 12'w x 8'h x 40'l |
| C12818L2-A | \$3,249 | 12'w x 8'h x 18'l |
| C12820L2-A | \$3,499 | 12'w x 8'h x 20'l |
| C12822L2-A | \$3,757 | 12'w x 8'h x 22'l |
| C12824L2-A | \$4,007 | 12'w x 8'h x 24'l |
| C12826L2-A | \$4,531 | 12'w x 8'h x 26'l |
| C12828L2-A | \$4,781 | 12'w x 8'h x 28'l |
| C12830L2-A | \$5,041 | 12'w x 8'h x 30'l |
| C12832L2-A | \$5,295 | 12'w x 8'h x 32'l |
| C12834L2-A | \$5,821 | 12'w x 8'h x 34'l |
| C12836L2-A | \$6,072 | 12'w x 8'h x 36'l |
| C12838L2-A | \$6,338 | 12'w x 8'h x 38'l |
| C12840L2-A | \$6,583 | 12'w x 8'h x 40'l |
| C12818L3-A | \$3,249 | 12'w x 8'h x 18'l |
| C12820L3-A | \$3,499 | 12'w x 8'h x 20'l |
| C12822L3-A | \$3,757 | 12'w x 8'h x 22'l |
| C12824L3-A | \$4,007 | 12'w x 8'h x 24'l |
| C12826L3-A | \$4,531 | 12'w x 8'h x 26'l |
| C12828L3-A | \$4,781 | 12'w x 8'h x 28'l |
| C12830L3-A | \$5,041 | 12'w x 8'h x 30'l |
| C12832L3-A | \$5,295 | 12'w x 8'h x 32'l |
| C12834L3-A | \$5,821 | 12'w x 8'h x 34'l |
| C12836L3-A | \$6,072 | 12'w x 8'h x 36'l |
| C12838L3-A | \$6,338 | 12'w x 8'h x 38'l |
| C12840L3-A | \$6,583 | 12'w x 8'h x 40'l |



CARPORTS

GSA PRICES

Prices reflect GSA basic discount plus IFF fee (0.75%) FOB Factory

| ITEM NUMBER | PRICE | APPROX. SIZE |
|-------------|---------|-------------------|
| C12818L4-A | \$3,249 | 12'w x 8'h x 18'l |
| C12820L4-A | \$3,499 | 12'w x 8'h x 20'l |
| C12822L4-A | \$3,757 | 12'w x 8'h x 22'l |
| C12824L4-A | \$4,007 | 12'w x 8'h x 24'l |
| C12826L4-A | \$4,531 | 12'w x 8'h x 26'l |
| C12828L4-A | \$4,781 | 12'w x 8'h x 28'l |
| C12830L4-A | \$5,041 | 12'w x 8'h x 30'l |
| C12832L4-A | \$5,295 | 12'w x 8'h x 32'l |
| C12834L4-A | \$5,821 | 12'w x 8'h x 34'l |
| C12836L4-A | \$6,072 | 12'w x 8'h x 36'l |
| C12838L4-A | \$6,338 | 12'w x 8'h x 38'l |
| C12840L4-A | \$6,583 | 12'w x 8'h x 40'l |
| C12818L5-A | \$3,501 | 12'w x 8'h x 18'l |
| C12820L5-A | \$3,779 | 12'w x 8'h x 20'l |
| C12822L5-A | \$4,065 | 12'w x 8'h x 22'l |
| C12824L5-A | \$4,344 | 12'w x 8'h x 24'l |
| C12826L5-A | \$4,895 | 12'w x 8'h x 26'l |
| C12828L5-A | \$5,173 | 12'w x 8'h x 28'l |
| C12830L5-A | \$5,462 | 12'w x 8'h x 30'l |
| C12832L5-A | \$5,743 | 12'w x 8'h x 32'l |
| C12834L5-A | \$6,298 | 12'w x 8'h x 34'l |
| C12836L5-A | \$6,576 | 12'w x 8'h x 36'l |
| C12838L5-A | \$6,871 | 12'w x 8'h x 38'l |
| C12840L5-A | \$7,144 | 12'w x 8'h x 40'l |
| C16818L1-A | \$3,562 | 16'w x 8'h x 18'l |
| C16820L1-A | \$3,845 | 16'w x 8'h x 20'l |
| C16822L1-A | \$4,135 | 16'w x 8'h x 22'l |
| C16824L1-A | \$4,418 | 16'w x 8'h x 24'l |
| C16826L1-A | \$4,974 | 16'w x 8'h x 26'l |
| C16828L1-A | \$5,256 | 16'w x 8'h x 28'l |
| C16830L1-A | \$5,548 | 16'w x 8'h x 30'l |
| C16832L1-A | \$5,834 | 16'w x 8'h x 32'l |
| C16834L1-A | \$6,393 | 16'w x 8'h x 34'l |
| C16836L1-A | \$6,675 | 16'w x 8'h x 36'l |
| C16838L1-A | \$6,966 | 16'w x 8'h x 38'l |
| C16840L1-A | \$7,251 | 16'w x 8'h x 40'l |
| C16818L2-A | \$3,889 | 16'w x 8'h x 18'l |
| C16820L2-A | \$4,208 | 16'w x 8'h x 20'l |
| C16822L2-A | \$4,535 | 16'w x 8'h x 22'l |
| C16824L2-A | \$4,854 | 16'w x 8'h x 24'l |
| C16826L2-A | \$5,446 | 16'w x 8'h x 26'l |
| C16828L2-A | \$5,765 | 16'w x 8'h x 28'l |
| C16830L2-A | \$6,094 | 16'w x 8'h x 30'l |
| C16832L2-A | \$6,416 | 16'w x 8'h x 32'l |
| C16834L2-A | \$7,011 | 16'w x 8'h x 34'l |
| C16836L2-A | \$7,330 | 16'w x 8'h x 36'l |
| C16838L2-A | \$7,657 | 16'w x 8'h x 38'l |
| C16840L2-A | \$7,978 | 16'w x 8'h x 40'l |



Carports

CARPORTS

GSA PRICES

Prices reflect GSA basic discount plus IFF fee (0.75%) FOB Factory

| ITEM NUMBER | PRICE | APPROX. SIZE | ITEM NUMBER | PRICE | APPROX. SIZE |
|-------------|---------|--------------------|-------------|----------|--------------------|
| C16818L3-A | \$3,889 | 16'w x 8'h x 18'l | C161418L2-A | \$4,482 | 16'w x 14'h x 18'l |
| C16820L3-A | \$4,208 | 16'w x 8'h x 20'l | C161420L2-A | \$4,801 | 16'w x 14'h x 20'l |
| C16822L3-A | \$4,535 | 16'w x 8'h x 22'l | C161422L2-A | \$5,127 | 16'w x 14'h x 22'l |
| C16824L3-A | \$4,854 | 16'w x 8'h x 24'l | C161424L2-A | \$5,447 | 16'w x 14'h x 24'l |
| C16826L3-A | \$5,446 | 16'w x 8'h x 26'l | C161426L2-A | \$6,237 | 16'w x 14'h x 26'l |
| C16828L3-A | \$5,765 | 16'w x 8'h x 28'l | C161428L2-A | \$6,555 | 16'w x 14'h x 28'l |
| C16830L3-A | \$6,094 | 16'w x 8'h x 30'l | C161430L2-A | \$6,884 | 16'w x 14'h x 30'l |
| C16832L3-A | \$6,416 | 16'w x 8'h x 32'l | C161432L2-A | \$7,206 | 16'w x 14'h x 32'l |
| C16834L3-A | \$7,011 | 16'w x 8'h x 34'l | C161434L2-A | \$7,999 | 16'w x 14'h x 34'l |
| C16836L3-A | \$7,330 | 16'w x 8'h x 36'l | C161436L2-A | \$8,318 | 16'w x 14'h x 36'l |
| C16838L3-A | \$7,657 | 16'w x 8'h x 38'l | C161438L2-A | \$8,644 | 16'w x 14'h x 38'l |
| C16840L3-A | \$7,978 | 16'w x 8'h x 40'l | C161440L2-A | \$8,966 | 16'w x 14'h x 40'l |
| C16818L4-A | \$4,326 | 16'w x 8'h x 18'l | C161418L3-A | \$4,482 | 16'w x 14'h x 18'l |
| C16820L4-A | \$4,693 | 16'w x 8'h x 20'l | C161420L3-A | \$4,801 | 16'w x 14'h x 20'l |
| C16822L4-A | \$5,068 | 16'w x 8'h x 22'l | C161422L3-A | \$5,127 | 16'w x 14'h x 22'l |
| C16824L4-A | \$5,435 | 16'w x 8'h x 24'l | C161424L3-A | \$5,447 | 16'w x 14'h x 24'l |
| C16826L4-A | \$6,076 | 16'w x 8'h x 26'l | C161426L3-A | \$6,237 | 16'w x 14'h x 26'l |
| C16828L4-A | \$6,443 | 16'w x 8'h x 28'l | C161428L3-A | \$6,555 | 16'w x 14'h x 28'l |
| C16830L4-A | \$6,821 | 16'w x 8'h x 30'l | C161430L3-A | \$6,884 | 16'w x 14'h x 30'l |
| C16832L4-A | \$7,191 | 16'w x 8'h x 32'l | C161432L3-A | \$7,206 | 16'w x 14'h x 32'l |
| C16834L4-A | \$7,835 | 16'w x 8'h x 34'l | C161434L3-A | \$7,999 | 16'w x 14'h x 34'l |
| C16836L4-A | \$8,202 | 16'w x 8'h x 36'l | C161436L3-A | \$8,318 | 16'w x 14'h x 36'l |
| C16838L4-A | \$8,577 | 16'w x 8'h x 38'l | C161438L3-A | \$8,644 | 16'w x 14'h x 38'l |
| C16840L4-A | \$8,947 | 16'w x 8'h x 40'l | C161440L3-A | \$8,966 | 16'w x 14'h x 40'l |
| C16818L5-A | \$4,703 | 16'w x 8'h x 18'l | C161418L4-A | \$5,629 | 16'w x 14'h x 18'l |
| C16820L5-A | \$5,112 | 16'w x 8'h x 20'l | C161420L4-A | \$5,996 | 16'w x 14'h x 20'l |
| C16822L5-A | \$5,529 | 16'w x 8'h x 22'l | C161422L4-A | \$6,371 | 16'w x 14'h x 22'l |
| C16824L5-A | \$5,939 | 16'w x 8'h x 24'l | C161424L4-A | \$6,742 | 16'w x 14'h x 24'l |
| C16826L5-A | \$6,621 | 16'w x 8'h x 26'l | C161426L4-A | \$7,815 | 16'w x 14'h x 26'l |
| C16828L5-A | \$7,030 | 16'w x 8'h x 28'l | C161428L4-A | \$8,182 | 16'w x 14'h x 28'l |
| C16830L5-A | \$7,449 | 16'w x 8'h x 30'l | C161430L4-A | \$8,559 | 16'w x 14'h x 30'l |
| C16832L5-A | \$7,862 | 16'w x 8'h x 32'l | C161432L4-A | \$8,930 | 16'w x 14'h x 32'l |
| C16834L5-A | \$8,547 | 16'w x 8'h x 34'l | C161434L4-A | \$10,009 | 16'w x 14'h x 34'l |
| C16836L5-A | \$8,957 | 16'w x 8'h x 36'l | C161436L4-A | \$10,373 | 16'w x 14'h x 36'l |
| C16838L5-A | \$9,374 | 16'w x 8'h x 38'l | C161438L4-A | \$10,748 | 16'w x 14'h x 38'l |
| C16840L5-A | \$9,786 | 16'w x 8'h x 40'l | C161440L4-A | \$11,119 | 16'w x 14'h x 40'l |
| C161418L1-A | \$4,155 | 16'w x 14'h x 18'l | C161418L5-A | \$6,007 | 16'w x 14'h x 18'l |
| C161420L1-A | \$4,437 | 16'w x 14'h x 20'l | C161420L5-A | \$6,416 | 16'w x 14'h x 20'l |
| C161422L1-A | \$4,727 | 16'w x 14'h x 22'l | C161422L5-A | \$6,833 | 16'w x 14'h x 22'l |
| C161424L1-A | \$5,010 | 16'w x 14'h x 24'l | C161424L5-A | \$7,245 | 16'w x 14'h x 24'l |
| C161426L1-A | \$5,764 | 16'w x 14'h x 26'l | C161426L5-A | \$8,360 | 16'w x 14'h x 26'l |
| C161428L1-A | \$6,046 | 16'w x 14'h x 28'l | C161428L5-A | \$8,769 | 16'w x 14'h x 28'l |
| C161430L1-A | \$6,338 | 16'w x 14'h x 30'l | C161430L5-A | \$9,188 | 16'w x 14'h x 30'l |
| C161432L1-A | \$6,624 | 16'w x 14'h x 32'l | C161432L5-A | \$9,601 | 16'w x 14'h x 32'l |
| C161434L1-A | \$7,381 | 16'w x 14'h x 34'l | C161434L5-A | \$10,722 | 16'w x 14'h x 34'l |
| C161436L1-A | \$7,664 | 16'w x 14'h x 36'l | C161436L5-A | \$11,128 | 16'w x 14'h x 36'l |
| C161438L1-A | \$7,953 | 16'w x 14'h x 38'l | C161438L5-A | \$11,545 | 16'w x 14'h x 38'l |
| C161440L1-A | \$8,239 | 16'w x 14'h x 40'l | C161440L5-A | \$11,958 | 16'w x 14'h x 40'l |

CARPORTS

GSA PRICES

Prices reflect GSA basic discount plus IFF fee (0.75%) FOB Factory

| ITEM NUMBER | PRICE | APPROX. SIZE |
|-------------|----------|-------------------|
| C20918L1-A | \$4,278 | 20'w x 9'h x 18'l |
| C20920L1-A | \$4,638 | 20'w x 9'h x 20'l |
| C20922L1-A | \$5,005 | 20'w x 9'h x 22'l |
| C20924L1-A | \$5,365 | 20'w x 9'h x 24'l |
| C20926L1-A | \$5,998 | 20'w x 9'h x 26'l |
| C20928L1-A | \$6,358 | 20'w x 9'h x 28'l |
| C20930L1-A | \$6,727 | 20'w x 9'h x 30'l |
| C20932L1-A | \$7,090 | 20'w x 9'h x 32'l |
| C20934L1-A | \$7,727 | 20'w x 9'h x 34'l |
| C20936L1-A | \$8,086 | 20'w x 9'h x 36'l |
| C20938L1-A | \$8,453 | 20'w x 9'h x 38'l |
| C20940L1-A | \$8,816 | 20'w x 9'h x 40'l |
| C20918L2-A | \$5,280 | 20'w x 9'h x 18'l |
| C20920L2-A | \$5,750 | 20'w x 9'h x 20'l |
| C20922L2-A | \$6,230 | 20'w x 9'h x 22'l |
| C20924L2-A | \$6,700 | 20'w x 9'h x 24'l |
| C20926L2-A | \$7,443 | 20'w x 9'h x 26'l |
| C20928L2-A | \$7,915 | 20'w x 9'h x 28'l |
| C20930L2-A | \$8,394 | 20'w x 9'h x 30'l |
| C20932L2-A | \$8,870 | 20'w x 9'h x 32'l |
| C20934L2-A | \$9,616 | 20'w x 9'h x 34'l |
| C20936L2-A | \$10,086 | 20'w x 9'h x 36'l |
| C20938L2-A | \$10,565 | 20'w x 9'h x 38'l |
| C20940L2-A | \$11,039 | 20'w x 9'h x 40'l |
| C20918L3-A | \$5,280 | 20'w x 9'h x 18'l |
| C20920L3-A | \$5,750 | 20'w x 9'h x 20'l |
| C20922L3-A | \$6,230 | 20'w x 9'h x 22'l |
| C20924L3-A | \$6,700 | 20'w x 9'h x 24'l |
| C20926L3-A | \$7,443 | 20'w x 9'h x 26'l |
| C20928L3-A | \$7,915 | 20'w x 9'h x 28'l |
| C20930L3-A | \$8,394 | 20'w x 9'h x 30'l |
| C20932L3-A | \$8,870 | 20'w x 9'h x 32'l |
| C20934L3-A | \$9,616 | 20'w x 9'h x 34'l |
| C20936L3-A | \$10,086 | 20'w x 9'h x 36'l |
| C20938L3-A | \$10,565 | 20'w x 9'h x 38'l |
| C20940L3-A | \$11,039 | 20'w x 9'h x 40'l |
| C20918L4-A | \$5,951 | 20'w x 9'h x 18'l |
| C20920L4-A | \$6,497 | 20'w x 9'h x 20'l |
| C20922L4-A | \$7,049 | 20'w x 9'h x 22'l |
| C20924L4-A | \$7,596 | 20'w x 9'h x 24'l |
| C20926L4-A | \$8,413 | 20'w x 9'h x 26'l |
| C20928L4-A | \$8,960 | 20'w x 9'h x 28'l |
| C20930L4-A | \$9,514 | 20'w x 9'h x 30'l |
| C20932L4-A | \$10,063 | 20'w x 9'h x 32'l |
| C20934L4-A | \$10,886 | 20'w x 9'h x 34'l |
| C20936L4-A | \$11,430 | 20'w x 9'h x 36'l |
| C20938L4-A | \$11,984 | 20'w x 9'h x 38'l |
| C20940L4-A | \$12,531 | 20'w x 9'h x 40'l |



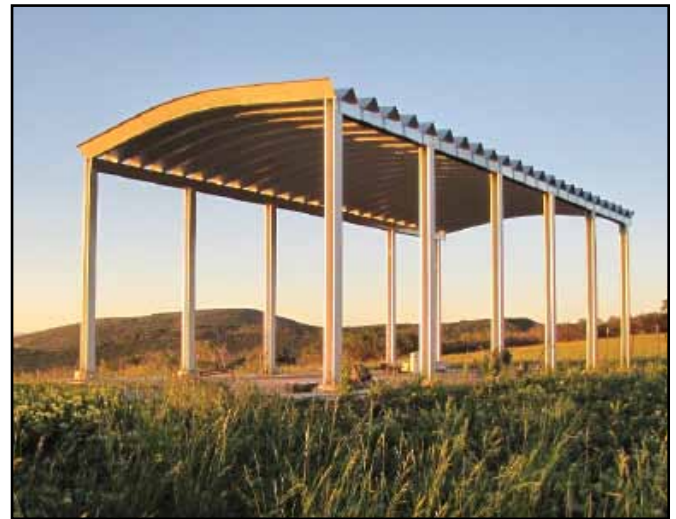
Carports

CARPORTS

GSA PRICES

Prices reflect GSA basic discount plus IFF fee (0.75%) FOB Factory

| ITEM NUMBER | PRICE | APPROX. SIZE | ITEM NUMBER | PRICE | APPROX. SIZE |
|-------------|----------|--------------------|-------------|----------|--------------------|
| C20918L5-A | \$5,951 | 20'w x 9'h x 18'l | C201518L4-A | \$7,255 | 20'w x 15'h x 18'l |
| C20920L5-A | \$6,497 | 20'w x 9'h x 20'l | C201520L4-A | \$7,801 | 20'w x 15'h x 20'l |
| C20922L5-A | \$7,049 | 20'w x 9'h x 22'l | C201522L4-A | \$8,353 | 20'w x 15'h x 22'l |
| C20924L5-A | \$7,596 | 20'w x 9'h x 24'l | C201524L4-A | \$8,902 | 20'w x 15'h x 24'l |
| C20926L5-A | \$8,413 | 20'w x 9'h x 26'l | C201526L4-A | \$10,152 | 20'w x 15'h x 26'l |
| C20928L5-A | \$8,960 | 20'w x 9'h x 28'l | C201528L4-A | \$10,698 | 20'w x 15'h x 28'l |
| C20930L5-A | \$9,514 | 20'w x 9'h x 30'l | C201530L4-A | \$11,253 | 20'w x 15'h x 30'l |
| C20932L5-A | \$10,063 | 20'w x 9'h x 32'l | C201532L4-A | \$11,802 | 20'w x 15'h x 32'l |
| C20934L5-A | \$10,886 | 20'w x 9'h x 34'l | C201534L4-A | \$13,060 | 20'w x 15'h x 34'l |
| C20936L5-A | \$11,430 | 20'w x 9'h x 36'l | C201536L4-A | \$13,602 | 20'w x 15'h x 36'l |
| C20938L5-A | \$11,984 | 20'w x 9'h x 38'l | C201538L4-A | \$14,155 | 20'w x 15'h x 38'l |
| C20940L5-A | \$12,531 | 20'w x 9'h x 40'l | C201540L4-A | \$14,703 | 20'w x 15'h x 40'l |
| C201518L1-A | \$4,871 | 20'w x 15'h x 18'l | C201518L5-A | \$7,255 | 20'w x 15'h x 18'l |
| C201520L1-A | \$5,231 | 20'w x 15'h x 20'l | C201520L5-A | \$7,801 | 20'w x 15'h x 20'l |
| C201522L1-A | \$5,598 | 20'w x 15'h x 22'l | C201522L5-A | \$8,353 | 20'w x 15'h x 22'l |
| C201524L1-A | \$5,958 | 20'w x 15'h x 24'l | C201524L5-A | \$8,902 | 20'w x 15'h x 24'l |
| C201526L1-A | \$6,789 | 20'w x 15'h x 26'l | C201526L5-A | \$10,152 | 20'w x 15'h x 26'l |
| C201528L1-A | \$7,148 | 20'w x 15'h x 28'l | C201528L5-A | \$10,698 | 20'w x 15'h x 28'l |
| C201530L1-A | \$7,518 | 20'w x 15'h x 30'l | C201530L5-A | \$11,253 | 20'w x 15'h x 30'l |
| C201532L1-A | \$7,880 | 20'w x 15'h x 32'l | C201532L5-A | \$11,802 | 20'w x 15'h x 32'l |
| C201534L1-A | \$8,714 | 20'w x 15'h x 34'l | C201534L5-A | \$13,060 | 20'w x 15'h x 34'l |
| C201536L1-A | \$9,074 | 20'w x 15'h x 36'l | C201536L5-A | \$13,602 | 20'w x 15'h x 36'l |
| C201538L1-A | \$9,441 | 20'w x 15'h x 38'l | C201538L5-A | \$14,155 | 20'w x 15'h x 38'l |
| C201540L1-A | \$9,804 | 20'w x 15'h x 40'l | C201540L5-A | \$14,703 | 20'w x 15'h x 40'l |
| C201518L2-A | \$5,873 | 20'w x 15'h x 18'l | | | |
| C201520L2-A | \$6,343 | 20'w x 15'h x 20'l | | | |
| C201522L2-A | \$6,822 | 20'w x 15'h x 22'l | | | |
| C201524L2-A | \$7,292 | 20'w x 15'h x 24'l | | | |
| C201526L2-A | \$8,233 | 20'w x 15'h x 26'l | | | |
| C201528L2-A | \$8,705 | 20'w x 15'h x 28'l | | | |
| C201530L2-A | \$9,185 | 20'w x 15'h x 30'l | | | |
| C201532L2-A | \$9,660 | 20'w x 15'h x 32'l | | | |
| C201534L2-A | \$10,604 | 20'w x 15'h x 34'l | | | |
| C201536L2-A | \$11,074 | 20'w x 15'h x 36'l | | | |
| C201538L2-A | \$11,553 | 20'w x 15'h x 38'l | | | |
| C201540L2-A | \$12,026 | 20'w x 15'h x 40'l | | | |
| C201518L3-A | \$5,873 | 20'w x 15'h x 18'l | | | |
| C201520L3-A | \$6,343 | 20'w x 15'h x 20'l | | | |
| C201522L3-A | \$6,822 | 20'w x 15'h x 22'l | | | |
| C201524L3-A | \$7,292 | 20'w x 15'h x 24'l | | | |
| C201526L3-A | \$8,233 | 20'w x 15'h x 26'l | | | |
| C201528L3-A | \$8,705 | 20'w x 15'h x 28'l | | | |
| C201530L3-A | \$9,185 | 20'w x 15'h x 30'l | | | |
| C201532L3-A | \$9,660 | 20'w x 15'h x 32'l | | | |
| C201534L3-A | \$10,604 | 20'w x 15'h x 34'l | | | |
| C201536L3-A | \$11,074 | 20'w x 15'h x 36'l | | | |
| C201538L3-A | \$11,553 | 20'w x 15'h x 38'l | | | |
| C201540L3-A | \$12,026 | 20'w x 15'h x 40'l | | | |



Customer Service

SteelMaster Customer Service

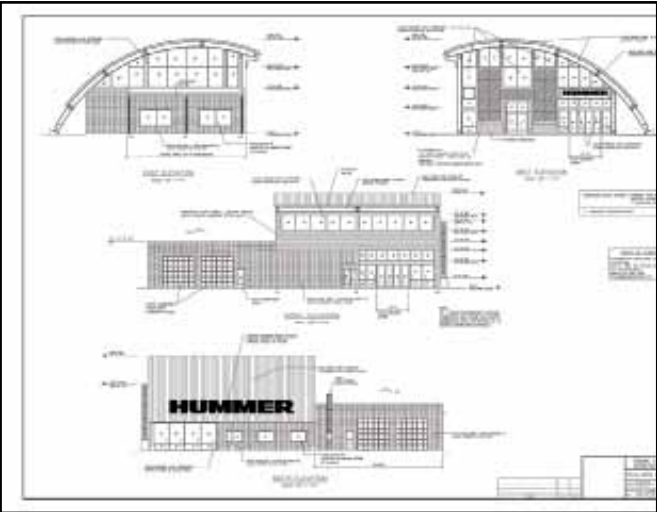
When you purchase a SteelMaster building or roofing system, the value of your investment is backed by a team of professionals standing by to serve you. From the moment the need to protect your space or materials arises, we will be ready to walk you through the often complex events required to make your building project a reality. We strive to do this by being easy to do business with and working at all times to make the experience a very positive process. At SteelMaster, our 30 years in business has been founded on repeat and referral business from satisfied customers.

Our services include:

- Design assistance and support.
- Certified/ stamped drawings to locations all over the globe.
- Licensed engineers to design for building load requirements.
- Construction professionals standing by to consult on building installation.
- The most extensive vendor/ contractor network in the industry.
- Turn-key building packages at your request.



www.SteelMasterUSA.com
800-341-7007



Building Construction

Erection of a SteelMaster building is simple and fast compared to most traditional building construction methods. Our components are made to precise standards of accuracy for easy assembly, saving time and money.



SteelMaster provides the widest building spans in the industry.



CATALOG



www.SteelMasterUSA.com
800-341-7007



**1023 Laskin Rd. Suite 109
Virginia Beach, VA 23451**