
E W Wells Group, LLC
FEDERAL SUPPLY SCHEDULE
Industrial Group: 89 Class: 899 - Environmental Services (ES)
Contract No: GS-10F-0253W

Contractor: E W Wells Group, LLC
1221 S. Lamar
Dallas, TX 75215
Web Site: www.wellsgroup.us

Business Size: Small, 8A Native American-owned

DUNS Number: 807008276

Contract Manager: Trisa Farrish

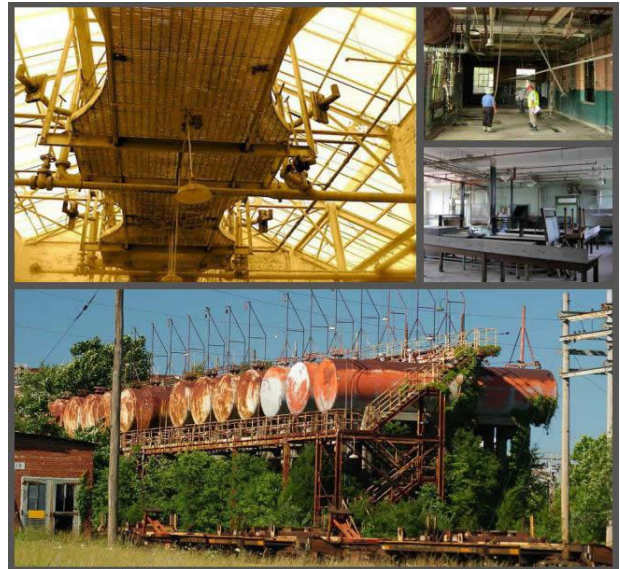
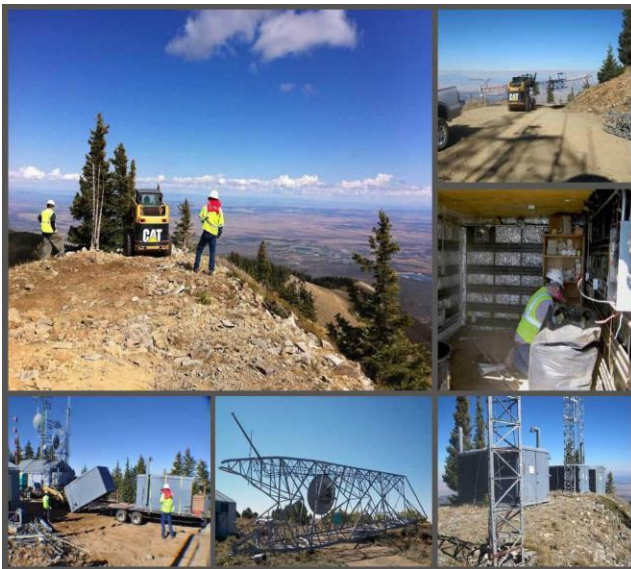
Contract Administrator: Domestic & Overseas
Trisa Farrish

Telephone: 214-421-2700
Fax Number: 214-421-3132

E-mail: Trisa.farrish@wellsgroup.us

Address: 1221 S. Lamar
Dallas, TX 75215

Contract Period: 7-14-2010 through 7-13-2020



Branch Offices

Boise, Idaho Tel: 214-421-2700 Fax: 214-421-3132 email: trisa.farrish@wellsgroup.us	Seattle, WA Tel: 214-421-2700 Fax: 214-421-3132 email: trisa.farrish@wellsgroup.us
Omaha, NE Tel: 214-421-2700 Fax: 214-421-3132 email: trisa.farrish@wellsgroup.us	Dallas, Texas Tel: 214-421-2700 Fax: 214-421-3132 email: trisa.farrish@wellsgroup.us
Sneads Ferry, NC Tel: 214-421-2700 Fax: 214-421-3132 email: trisa.farrish@wellsgroup.us	San Diego, CA Tel: 214-421-2700 Fax: 214-421-3132 email: trisa.farrish@wellsgroup.us

GENERAL SERVICES ADMINISTRATION

Federal Supply Service

Authorized Federal Supply Schedule Price List

On-line access to contract ordering information, terms and conditions, up-to-date pricing, and the option to create an electronic delivery order are available through GSA Advantage!, a menu-driven database system.

The INTERNET address for GSA Advantage! is: <http://GSAAdvantage.gov>.

For more information on ordering from Federal Supply Schedules, click on the FSS Schedule button at <http://www.fss.gsa.gov>.

TABLE OF CONTENTS

Overview.....	4
Customer Information	5
Environmental Services (ES).....	7
Scope of Services	7
Labor Category Descriptions	10
Price List	16

OVERVIEW

E.W. Wells Group, LLC (Wells) is a premier, nationwide provider of environmental remediation and site services. Wells has earned a distinguished reputation amongst our clients from both the federal and private sectors for resolving extensive and complex munitions and environmental issues, for superior site planning and design services, and for our unparalleled turnkey demolition and construction projects. Our company's focus is to seek out, educate ourselves, and utilize the leading-edge innovations that can be applied within our field. We are diligent in our conviction to continue to meet the ever-changing environmental and economic demands of our industry and our clientele. EW Wells Group, LLC combines innovation with experience to provide precisely what our client requires.

Services Provided

From our headquarters in Dallas, Texas, Wells offers innovative services to clients worldwide who face continuing changes to the environmental regulatory landscape and additional cost pressures. Our focus is helping our clients add value to their existing programs. Our staff is recognized for their experience in a number of technical areas including site planning, demolition, environmental auditing, water quality, wastewater treatment, geology, hydrogeology, site assessment, remediation, pollution prevention, environmental impact assessment, permitting, and environmental management systems.

We are familiar with and well-versed in all federal environmental laws, including the Clean Water Act (CWA), the Clean Air Act (CAA), the National Environmental Policy Act (NEPA), the Resource Conservation and Recovery Act (RCRA), and the Comprehensive Environmental Response, Compensation, and the Liability Act (CERCLA). Moreover, we also know how to work with state and local regulators to solve environmental compliance issues for our clients.

Quality

Wells employs a quality management program that has defined processes, roles and responsibilities; requires all project management plans to have site-specific quality control plans; gives the project quality manager the authority to stop work if non-conformances are not corrected, and requires quality flow down to all subcontractors.

Safety

Safety is extremely important to Wells; our commitment is second to none. All projects are required to prepare and implement a Health and Safety Plan. Project meetings at any level begin with a safety tip, discussion of issues, recommendations for improvement, or review of procedures.

CUSTOMER INFORMATION

1a. SPECIAL ITEM NUMBERS (SINs) Offered:

Environmental Services

899-1 (and 899-1RC): Environmental Consulting Services

899-8 (and 899-8RC): Remediation and Reclamation Services

1b. Identification of the lowest priced model: N/A

1c. Description of all corresponding job titles, experience, functional responsibility, and education for those types of employees or subcontractors who will perform services:

Page 8

2. Maximum Order Limitation: \$1,000,000

3. Minimum Order: \$100

4. Geographic Coverage (Delivery Area): FOB worldwide

5. Point(s) of Production (city, county, and state or foreign country):

Same as Company Address

6. Discount from list prices or statement of net price: Government net prices (discounts already deducted).

Page 10

7. Quantity discounts: None

8. Prompt payment terms: Net 30 days

9a. Notification that Government purchase cards are accepted below the micro purchase threshold: Yes

9b. Notification whether Government purchase cards are accepted or not accepted above the micro purchase threshold: Contact Contractor

10. Foreign items (list items by country of origin): None

11a. Time of Delivery: Specified on the Task Order

11b. Expedited Delivery: Contact Contractor

11c. Overnight and 2-day delivery: Contact Contractor

11d. Urgent Requirements: Contact Contractor

12. FOB Point(s): Destination
- 13a. Ordering Address(es): Same as Company Address
- 13b. Ordering Procedures: For supplies and services, the ordering procedures, information on Blanket Purchasing Agreements (BPA's), and a sample BPA can be found at the GSA/FSS Schedule homepage (fss.gsa.gov/schedules).
14. Payment address:

MAIL: 14420 Albemarle Point Place, Suite 225
Chantilly, Virginia 20151-1750
15. Warranty provision: Per Task Order.
16. Export Packing Charges: N/A
17. Terms and conditions of Government commercial credit card acceptance (if applicable): N/A
18. Terms and conditions of rental, maintenance, and repair: N/A
19. Terms and conditions of installation: N/A
20. Terms and conditions of repair parts indicating date of parts price lists and any discounts from: N/A
21. List of service and distribution points: N/A
22. List of participating dealers: N/A
23. Preventive maintenance: N/A
- 24a. Special attributes such as environmental attributes (e.g., recycled content, energy efficiency, and/or reduced pollutants: N/A
- 24b. If applicable, indicate that Section 508 compliance information is available on Electronic and Information Technology (EIT) supplies and services and show where full details can be found (e.g., contractor's website or other location). www.mse-environmental.com
25. Data Universal Number System (DUNS) number: 807008276
26. Notification regarding registration in Central Contractor Registration (CCR) database:

Registered

899 – ENVIRONMENTAL SERVICES

Scope of Services

The Environmental Services provided by Wells encompass all the major environmental science and engineering disciplines including industrial and domestic wastewater treatment process studies and design, hazardous waste management, site investigations, remediation design and site remediation management, environmental auditing, air quality studies and permitting, environmental assessments, construction management, treatment plant O&M, water and wastewater master planning, and pollution prevention. The management and staff of Wells bring many years of successful management and technical experience in essentially all phases of the environmental field, and many are nationally recognized experts in their respective fields.

Wells also provides Environmental Services to governmental and industrial clients on an international basis and has worked in over 40 countries on a wide variety of types of projects. Wells has an extensive network of affiliates around the world capable of providing high level technical expertise on a global basis.

Under the GSA Environmental Services schedule, Wells can provide clients with total environmental solutions through two Special Item Numbers (SINs).

SIN 899-1 (and 899-1RC): Environmental Consulting Services

Wells provides operational services, advice, or guidance in support of agencies' Environmental Consulting Services, Waste Management Services, and Environmental Compliance Services requirements. Examples include, but are not limited to:

- Environmental Impact Statements Under NEPA;
- Endangered Species and/or Wetlands Analysis;
- Watershed and Other Natural Resource Management Plans;
- Environmental Program Management and Environmental Regulation Development;
- Economic, Technical and/or Risk Analysis; and
- Identification and Mitigation of Threats.
- Environmental Compliance Audits;
- Compliance Management and/or Contingency Planning;
- Permitting;
- Spill Prevention/Control and Countermeasure (SPCC) Plans;
- Pollution Prevention (P2) Surveys;
- ISO 14000, Environmental Management Systems (EMS);
- Data Collection, Feasibility or Risk Analysis;
- RCRA/CERCLA Site Investigation;
- Hazard and/or Non Hazard Exposure Assessments;
- Waste Characterization and Source Reduction Studies;
- Review and Recommendation of Waste Tracking or Handling Systems;
- Waste Management Plans and/or Surveys;

- Waste Minimization /Pollution Prevention Initiatives;
- Review of Technologies and Processes Impacting Waste Management;
- Management, Furnishing or Inventory of Material Safety Data via CD, Internet, Facsimile, Mail or Other Media;
- Reporting and Compliance Software;
- Development of Emergency Response Plans;
- Hazardous/Non Hazardous Materials Tracking Software; and
- Community Right-to-Know Act Reporting.

SIN 899-8 (and 899-8RC): Remediation and Reclamation Services

Wells provides the full range of methods and technologies needed to support activities necessary for Remediation and Reclamation Services that are allowed by the Service Contract Act under FAR 37.3, in accordance with host nation, federal, state, and/or local statutes and regulations. These Remediation and Reclamation Services include, but are not limited to: excavation; removal; remediation related laboratory testing; and the transportation, storage; treatment, and/or disposal of hazardous wastes. Examples include, but are not limited to:

- Site Characterizations, Field Investigations, Conservation and Closure of Sites;
- Long Term Monitoring/Long Term Operation (LTM/LTO);
- Containment, Monitoring and/or Reduction of Hazardous Waste Sites;
- Excavation, Removal, Transportation, Storage, Treatment and/or Disposal of Hazardous Wastes;
- Wetland Restoration;
- Emergency Response;
- UST/AST Removal;
- Air Monitoring; and
- Soil Vapor Extraction; Stabilization/Solidification; Bio-Venting; Carbon Absorption and/or Reactive Walls and Containment.

Note: Inappropriate use of this SIN is the providing of Remediation Services not specifically related to operational services, advice or guidance and associated disciplines. In addition, Construction and Architect-Engineering Services as set forth in FAR Part 36 (including construction, alteration or repair of buildings, structures, or other real property) are not authorized.

Services under this SIN do NOT include radioactive or nuclear waste.

**Wells Labor Category Descriptions
for GS 10F0253W Environmental Services**

Labor Category	Labor Classification Requirements	Functional Responsibilities
Principal Engineer / Senior Specialist	Minimum 20 years practical experience after B.S. degree. Advanced degree desirable. P.E. / P.G. registration or equivalent. Considered an expert in specialty area and/or officer of company.	Serves in one or more of the following capacities: high level company management, program management, expert witness, or senior sector expert. Provides guidance to project managers in dealing with clients and regulators. Addresses significant technical issues affecting the company or clients.
Senior Engineer / Scientist	Minimum 12 years practical, pertinent experience after B.S. degree. Advanced degree desirable. Trained beyond basics through continuing education. P.E. / P.G. registration or equivalent.	Plans, develops, and executes engineering or scientific projects or tasks within projects, addressing unique or complex problems or specialty areas. This may involve research of the subject area, definition of scope, selection of investigative approaches, development of concepts/solutions, and carrying out the task/project, independently or as a team member. Assignments may require unconventional or novel approaches, be in an area of specialization, and/or require research. Acts independently on technical matters pertaining to his/her field. Serves in a lead technical role on projects and proposals/interviews. Plans/develops budgets and prepares proposals. Reviews project deliverables with emphasis on engineering/scientific and technical quality, client satisfaction, and project profitability. Mentors or guides staff within his/her area(s) of expertise. Manages projects.
Engineer / Scientist	Minimum 6 years experience in science or engineering after B.S. degree. P.E. / P.G. registration or equivalent. At least 2 years experience managing medium-sized projects or serving as lead technical specialist.	Makes decisions independently on engineering or scientific problems and methods. In a supervisory capacity, plans, develops, coordinates, and manages small or moderate-size engineering or scientific projects or tasks with complex features. Management of projects includes being the lead technical person and client contact, scheduling of personnel, and other management duties such as projecting manpower requirements, billing projections, invoicing, and accounts receivable management. May serve in a lead technical role on projects and on proposals/interviews.

Labor Category	Labor Classification Requirements	Functional Responsibilities
Project Superintendent	Minimum 15 years of experience with program management experience with multidiscipline contract requirements or a Bachelor's degree with 8 years of related experience.	Manages multiple, concurrent contracts; manages or oversees multiple large projects / work assignments; supervises Project Managers and technical staff to further their company development; participates in company sales / marketing activities and efforts; participates in long-term company planning as required.
Project Manager	Minimum 8 years of experience with multiple projects and multidisciplinary contract requirements or a Bachelor's degree with 4 years of related experience.	Manages large projects / work assignments and/or multiple medium / small projects; supervises technical staff to further their company development; participates in company sales / marketing activities and efforts as required.
Project Foreman	Bachelor's degree and 3 years of related experience.	Performs project work as assigned and manages routine project efforts. Collects and analyzes data independently or under supervision. Directs staff level personnel in assigned field tasks. Writes full or portions of reports.
Heavy Equipment Operator	High school diploma or GED and 2 years of related experience. 40-hour	Operates heavy equipment such as loaders, excavators, and forklifts under direction of the project manager or site superintendent. Projects typically involve excavating, loading, and moving soil and other materials.
Laborer	High school diploma or GED with no minimum experience required.	Performs project tasks which primarily require physical effort and little specialized skills such as shoveling, loading / unloading trucks, and moving supplies / materials.
Administrative Assistant	Bachelor's degree in any business management discipline or equivalent, and a minimum of 2 years of experience in providing administrative and business operations support to government or commercial programs.	Manages several assigned tasks at one time. Plans, directs, or coordinates supportive services of an organization, such as procurement, invoicing, recordkeeping, mail distribution, telephone operator / receptionist, and other office support services. Includes contract and subcontract management administrative support services.

E.W. Wells Group, LLC GSA Price List

Table 1: Labor Rates

Labor Category	Hourly Rate
Principal Engineer / Senior Specialist	\$171.27
Senior Engineer / Scientist	\$113.85
Engineer / Scientist	\$89.10
Superintendent	\$74.81
Project Manager	\$64.84
Foreman	\$49.87
Heavy Equipment Operator	\$39.90
Laborer	\$30.37
Administrative Assistant	\$66.41

Table 2: Other Direct Rates

Equipment Item	Hourly Rate, Unless Otherwise Specified
Cat 235 Excavator w/Grapple	\$194.51
Cat 235 Excavator w/Bucket	\$179.55
Cat 330 Excavator w/Grapple	\$164.58
Cat 330 Excavator w/Breaker	\$284.28
Cat 330 Excavator w/Bucket	\$159.60
Cat 330 Excavator w/Magnet	\$299.24
Cat 345 Excavator w/Shear	\$398.99
Cat 345 Excavator w/Hammer	\$398.99
Cat 345 Excavator w/Crusher	\$423.93
Cat 345 Excavator w/Bucket	\$249.37
Cat 345 Excavator w/Grapple	\$249.37
Cat 963 Track Loader	\$154.61
Cat 815 Compactor	\$139.65
100 Ton Crane	\$329.17
Track Skidster	\$84.79
Track Skidster w/Grapple	\$89.77
Track Skidster w/Magnet	\$109.72
End Dump Tractor Trailer	\$89.77
Water Wagon	\$124.69
Man Lift	\$49.87

SCA Eligible Labor Category	SCA Equivalent Code - Title	Wage Determination Number
Heavy Equipment Operator	23440 – Heavy Equipment Operator	05-2509
Laborer	23470 - Laborer	05-2509
Administrative Assistant	01020 – Administrative Assistant	05-2509
<p>The Service Contract Act (SCA) is applicable to this contract and includes SCA applicable categories. The prices for the indicated SCA labor categories are based on the U.S. Department of Labor Wage Determination identified in the SCA matrix. The prices offered are based on the preponderance of where work is performed and should the contractor perform in an area with lower SCA rates, resulting in lower wages being paid, the task order prices will be discounted accordingly.</p>		