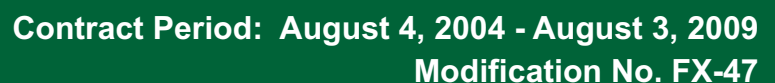




CONTRACT NO. GS-10F-0455P





GENERAL SERVICES ADMINISTRATION FEDERAL SUPPLY SERVICE

Authorized Federal Supply Schedule Catalog and Pricelist
for



MISSION ORIENTED BUSINESS INTEGRATED SERVICES (MOBIS)

Contract No. GS-10F-0455P



ECOLOGY AND ENVIRONMENT, INC.

1700 NORTH MOORE STREET, SUITE 1610
ARLINGTON, VIRGINIA 22209
Phone: 703-522-6065
FAX: 703-558-7950
www.ene.com

Contract Information:

Federal Supply Schedule Industrial Group 874
Industrial Class R499

Contract Period: August 4, 2004 - August 3, 2009

Modification No. FX47

Price list Effective April 16, 2007

On-line access to contract ordering information, terms and conditions, up-to-date pricing, and the options to create an electronic delivery order is available through GSA Advantage!tm, a menu-driven database system. The Internet address for GSA Advantage!tm is <http://www.fss.gsa.gov>.

TABLE OF CONTENTS

<u>Section</u>	<u>Page</u>
Federal Supply Schedule for MOBIS CUSTOMER INFORMATION	3
About E & E OFFERING BEST-VALUE IN MOBIS	6
DESCRIPTION OF SERVICES	8
PROCEDURES FOR HIRING E & E USING GSA	9
CONTRACT PRICE LIST	10

FSS for MOBIS

CUSTOMER INFORMATION

- **Contractor's Ordering Address:**

Robert J. King, Program Manager
Ecology and Environment, Inc.
1501 Lee Highway, Suite 306
Arlington, VA 22209
Telephone: 703-522-6065 x3801
Cell Phone: 703-850-8113
Fax: 703-558-7950
Email: rking@ene.com

- **Contract Administration:**

Robert J. King, Program Manager
Ecology and Environment, Inc.
1501 Lee Highway, Suite 306
Arlington, VA 22209
Telephone: 703-522-6065 x3801
Cell Phone: 703-850-8113
Fax: 703-558-7950
Email: rking@ene.com

- **Statistical Information for Government Ordering Office Completion of Std Form 279**

Data Universal Numbering System (DUNS): 05-8648312
Type of Contractor: Other than Small Business under SIC Code 8742, 8999
NAICS Codes: 541611, 541330, 541380, 541620, 562910, 924110
Taxpayer Identification Number (TIN): 16-0971022
Cage Code: 8R642

1. Table of Awarded Special Item Numbers (SIN)

SIN 874-1	Consulting Services
SIN 874-2	Facilitation Services
SIN 874-3	Survey Services

2. Maximum Order: \$1,000,000. Ecology and Environment, Inc., will honor any order exceeding the maximum order in accordance with the requirements of FAR 52-216.19.

3. Minimum Order: \$300. When the Government requires supplies or services covered by the contract in an amount of less than \$300, the Government is not obligated to purchase, nor is Ecology and Environment, Inc., obligated to furnish, those supplies or services under the contract.

4. Geographic Coverage (Delivery Area): The geographic scope of this contract is domestic and is available to: executive agencies; other federal agencies, mixed ownership government corporations, and the District of Columbia; government contractors authorized in writing by a Federal Agency pursuant to 48 CFR 51.1; and other activities or organizations authorized by statute or regulation to use GSA as a source of supply.

5. Points of Project Performance:

Corporate Office:	368 Pleasant View Drive, Lancaster, New York 14086
Albany	125 Wolf Road, Suite 301, Albany, New York 12205
Anchorage:	840 K Street, Suite 100, Anchorage, Alaska 99501
Austin:	125 Golf Crest Cove, Suite 300,, Austin, Texas 78734
Baton Rouge:	11550 Newcastle Avenue, Suite 250, Baton Rouge, Louisiana 70816
Boulder:	4888 Pearl East Circle, Suite 108, Boulder, Colorado 80301
Chicago:	33 West Monroe St., Suite 550, Chicago, Illinois 60603
Dallas:	1412 Main Street, Suite 1500, Dallas, Texas 75202
Greenville, SC	1200 Woodruff Road, A-3, Greenville, SC 29607
Houston:	2 Riverway, Suite 625, Houston, Texas 77056
Kansas City:	Cloverleaf Building 3, Suite 308, 6405 Metcalf, Overland Park, Kansas 66202
Miami Lakes:	14411 Commerce Way, Suite 350, Miami Lakes, Florida 33016
New York:	90 Broad Street, Suite 1906, New York, New York 10004
Orlando	801 West State Road 436, Suite 2011, Altamonte Springs, Florida 32714
Pensacola:	220 West Garden Street, Suite 404, Pensacola, Florida 32502
Portland:	333 Southwest Fifth Avenue, Suite 608, Portland, Oregon 97204
San Diego:	437 J Street, Suite 207, San Diego, CA 92101
San Francisco:	130 Battery Street, Suite 400, San Francisco, California 94111
Seattle:	720 Third Avenue, Suite 1700, Seattle, WA 98104
Tallahassee:	1974 Commonwealth Lane, Tallahassee, Florida 32303
Virginia Beach:	324 Southport Circle, Suite 103, Virginia Beach, Virginia 23452
Washington, DC:	1501 Lee Highway, Suite 306, Arlington, Virginia 22209
West Palm Beach:	1665 Palm Beach Lakes Boulevard, Suite 500, West Palm Beach, Florida 33401

6. Statement of Net Price: Government Net (discounts already deducted).

7. Quantity Discounts: None

8. Prompt Payment Terms: NET 30 days

9. Government Purchase Cards: Ecology and Environment, Inc., accepts Government Credit Cards on all orders regardless of size.

10. Foreign items: None

11a. Time of Delivery: To be negotiated with ordering agency on each task order.

11b. Expedited Delivery: To be negotiated on each task order.

11c. Overnight and 2-Day Delivery: To be negotiated on each task order.

11d. Urgent Requirements: To be negotiated on each task order.

12. FOB Point(s): Destination.

13a. Ordering Address:

Ecology and Environment, Inc.
Attn: Robert J. King
1501 Lee Highway, Suite 306
Arlington, VA 22209
Telephone: 703-522-6065 x3801
Cell Phone: 703-850-8113
Fax: 703-558-7950
Email: rking@ene.com

14. Payment Address:

Ecology and Environment, Inc.
Attn: Accounts Receivable
368 Pleasant View Drive
Lancaster, NY 14086

13b. Ordering Procedures: For supplies and services, the ordering procedures and information on Blanket Purchase Agreements (BPAs) are found in Federal Acquisition Regulation (FAR) 8.405.

15. Warranty Provisions: Not Applicable

16. Export Packaging Charges: Not Applicable

17. Terms and Conditions of Government Purchase Card Acceptance: No limitations on acceptance.

18 – 23: Not Applicable

24a. Special Attributes: Recycled paper is used for all our documents. Environmentally friendly products are used throughout the company. E & E practices sustainable design engineering for E & E building design, water use conservation, energy efficiency in computer equipment, employee incentive for use of mass transit and carpooling, and promotion of environmental awareness programs within the community.

24b. Ecology and Environment, Inc., is fully compliant with Section 508, which requires the use of Electronic and Information Technology (EIT) supplies and services.

25. Data Universal Number System (DUNS) Number: 05-8648312

26. Contractor is registered in Central Contractor Registration (CCR) Database: Yes

27. Ecology and Environment, Inc., will accept either Labor Hours or Firm Fixed Price Task Orders.



E & E's headquarters, Lancaster, New York

About E & E

OFFERING THE BEST VALUE IN ENVIRONMENTAL MANAGEMENT SERVICES

Founded in 1970, E & E is a broad based consulting, engineering, and design firm operating from 27 U.S. offices and subsidiaries and affiliates around the world. We employ nearly 1,000 staff in 75 separate disciplines embracing the physical, biological, social, business, and health sciences. Our multidisciplinary approach enables us to offer a range of services that encompass management, design, engineering, and IT.

E & E teams have worked closely with clients to successfully complete over 25,000 projects. Internationally, we have established offices, subsidiaries, joint ventures, partnerships, and have conducted business in 67 countries.

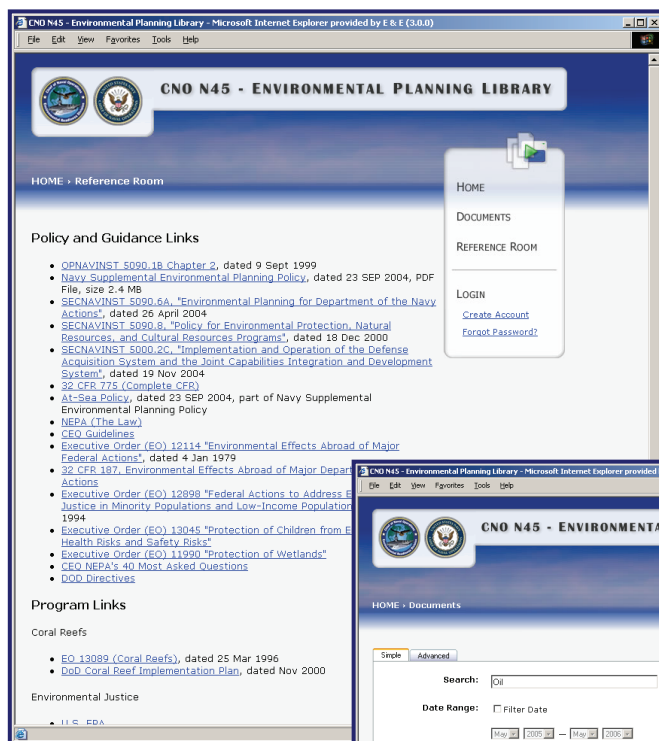
VALUE-ADDED SERVICES

- Technical staff in 75 disciplines encompassing environmental, engineering, business and IT expertise.
- Project Managers proficient in maintaining schedules and budgets, working with clients, stakeholders, and the public to ensure project success.
- Experienced GSA contractor with multiple previous contracts with a number of Federal agencies: USAF, USACE, BLM, NPS, US Forest Service.

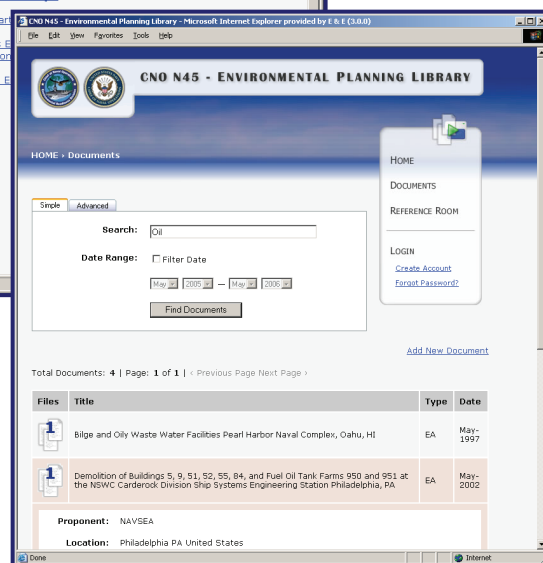
E & E has been recognized as one of the top 20 all-environmental companies by *Engineering News Record*, as one of America's best-managed companies (annual sales < \$350 million) by *Forbes*, and as one of the best-managed companies on the American Stock Exchange by *Fortune*.

E & E provides technical and management services across a broad spectrum of business management functions. The firm has been in

continuous operation for 36 years. Over that time, E & E has developed a reputation for reliability and quality performance with virtually all of its domestic clients and teaming partners.



E & E developed a Web-based environmental planning library to provide Navy environmental planners with a centralized database of archived environmental- and planning-related policy documents.





E & E has developed a number of specialized technical services, including:

- Organizational assessments and performance evaluations;
- Strategic Planning;
- Facilitating strategic and other decision processes;
- Qualitative, quantitative, and participatory survey design; and
- Administrative and facility support.

We provide high-quality, efficient, and cost-effective “value-added” services to numerous federal, state, and local agencies, organizations, and governments including:

- EPA,
- DoD (Army, Navy, and Air Force),
- DOE,
- NPS,
- BLM,
- MMS, and
- Numerous state agencies.

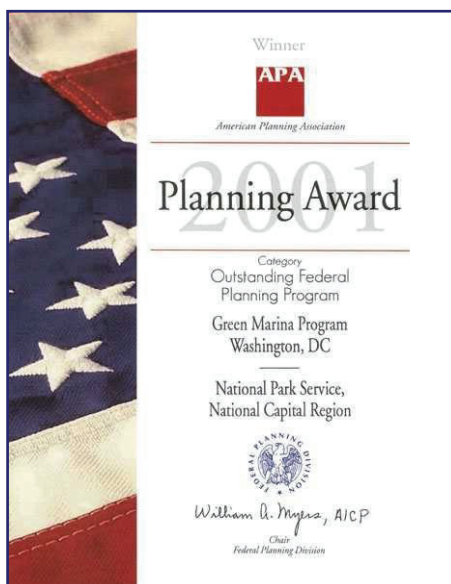
E & E has been awarded repeat, consecutive

contracts with numerous federal agencies using our GSA contract mechanisms.

Since the award of the schedule, we have been awarded over 300 projects totaling more than \$30 million. This reflects our commitment and ability to complete projects on time and within budget, supply top-quality specialists at the best value to the client, and implement innovative and cost-effective solutions.

Additional evidence comes from our various awards for our projects:

- E & E’s 100-year land use plan for DOE’s INEEL won the American Planning Association’s Planning Award; and
- NPS and E & E received the American Planning Association’s 2001 Planning Award in the category of Outstanding Federal Planning Program for the Green Marina Program, Washington, DC.



The back of this certificate, awarded jointly to NPS and E & E, states, “Most impressive was the comprehensiveness of approach. Implementation will prove formidable as the recom challenge many long-standing practices.”

- BLM and E & E received a DOI 2007 Environmental Achievement Award for the remediation and regulatory closure of the Exell Helium Plant in Texas.
- E & E received the 2007 Project Merit Award for Sustainability and Resource Protection received from the *Environmental Business Journal*, in recognition of E & E’s successful deployment of its GreenRide® commuter assistance tool.

Our flexible corporate structure, multidisciplinary staff, and extensive experience make us uniquely suited to meet your management requirements.

DESCRIPTION OF SERVICES

The following is a list of services that Ecology and Environment, Inc., (E & E) can provide under each Special Item Number (SIN).

SIN 874-1: Consulting Services

E & E provides services to assist federal agencies by providing expert advice, assistance, guidance, or counseling in support of agencies' mission oriented business functions. This includes studies, analyses and reports documenting any proposed developmental, consultative or implementation efforts. Examples of consultation include but are not limited to: strategic business and action planning; high performance work; process and productivity improvement; systems alignment; leadership systems; organizational assessments; cycle time; performance measures and indicators; program audits, evaluations, and customized training.

PROJECT EXAMPLES

For the USACE Fort Worth District, E & E prepared the *Sustainable Installation Design Guide* (SIDG) that will be used to guide the facility's "green" development over the next 20 years. The SIDG provides standards and criteria for all maintenance, renovation, and new construction projects at the installation. Specific standards and criteria developed include building design, circulation, site planning, landscaping, site elements and force protection. E & E is applying its expertise in the areas of sustainable development, green building design, and resource stewardship to help the Army create a better quality of life for soldiers and their families, while using less energy, water, and other resources and generating less waste. The new IDG is a fully interactive, Web-based product that incorporates the principles of sustainability, green design, and sound stewardship of resources.

E & E has extensive experience implementing our multiple award-winning commute trip reduction and savings

tracking solution GreenRide®. GreenRide (www.greenride.com) is a Web-based, user-driven ride-matching solution designed to increase participation in carpooling, vanpooling, and the use of public transportation for employees who commute to a workplace. We have a version for metropolitan areas and universities, and we have a version designed for organizations. Our own company has reduced employee trips by more than 32,000,000 miles since we began measuring our results.

GreenRide® has been selected by 38 customers in 16 different states and internationally, which provides ridesharing and emission tracking solutions to over 30 million people. It helps our customers reduce GHG emissions, energy consumption, and save money. GreenRide® also helps our customers quantify and track the environmental and economic and energy savings so they can report back to their stakeholders on environmental performance relating to mobile emission sources.

E & E has provided GreenRide® to help US Green Building Council "green" its conferences two years running—the 2007 Greenbuild conference had a record breaking 25,000 attendees.

GREENRIDE®

AWARD WINNING SOFTWARE
2005 ESRI ARCWEB CHALLENGE
INNOVATION • ORIGINALITY • EASE OF USE

HOME PRODUCTS TECHNOLOGY HISTORY CONTACT US

Revolutionizing the way we commute!

GreenRide is Ecology and Environment, Inc.'s award-winning web-based ridesharing solution designed for developing successful alternative transportation programs such as carpooling, vanpooling, bike-to-work and park-and-ride.

GreenRide's Web- and geographic information system- (GIS) based architecture provides a robust "out-of-the-box" ability to manage ride matching programs, integrate trip planning including transit, and to promote environmental sustainability, as well as the flexibility to customize the program to specific organizational needs.

This easy-to-use program is revolutionizing the way we commute - see how by selecting the edition below that is best for you!

Metropolitan Edition Employer Edition Campus Edition

SIN 874-2: Facilitation Services

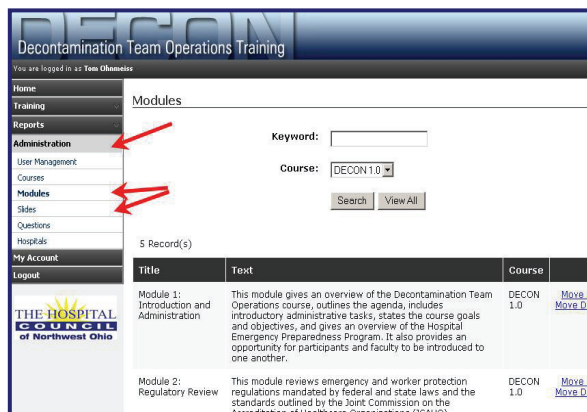
E & E assists with facilitation and related decision support services to federal agencies engaging in collaboration efforts, working groups, or integrated product, process, or self-directed teams. Agencies bringing together diverse teams and/or groups with common and divergent interests may require a neutral party to assist them in: the use of problem solving techniques; defining and refining the agenda; debriefing and overall meeting planning; resolving divergent views, disagreements, and disputes; logistical meeting and conference support when performing technical facilitation; convening and leading large and small group briefings and discussions; providing a draft for the permanent record; recording discussion content and focusing decision-making; and preparing draft/ final reports for dissemination.

PROJECT EXAMPLES

E & E has conducted numerous sustainability workshops that analyze federal and international regulations, voluntary initiatives, and tactical and strategic solutions to help combat global warming and promote the more sustainable use of resources. We have held these workshops and seminars at client sites around the world, at various other venues, and at our training center in New York State. These workshops and seminars help our clients prioritize implementation of their sustainability initiatives and provide them with a basis to make more informed decisions.

In 2006, as part of a statewide health resources capability assessment for the Ohio Hospital Association, we created a Web-based needs assessment survey tool to help determine the level of preparedness for Ohio hospitals. Also in 2006, for a statewide burn/trauma capacity assessment on behalf of the Ohio Department of Health (Ohio DOH) Bureau of Public Health Preparedness and the Ohio Hospital Association, we assessed the capacity of Ohio hospitals and supporting health care systems to deliver coordinated, effective care to victims of burns and trauma resulting from natural and human-made disasters.

Also, we are performing a statewide hospital energy efficiency study in New York. In partnership with the Greater New York Hospital Association and for New York State Energy Research and Development Authority (NYSERDA), E & E is developing, implementing, and marketing an energy conservation program for hospitals and healthcare facilities with the overall goal of identifying areas of energy efficiency and energy conservation measures that require minimal or no capital expenditures for hospitals and associated health care institutions.



The DECON training Web site was designed by E & E's IT staff to support Ohio hospitals.

SIN 874-3: Survey Services

E & E provides expert consultation, assistance, and deliverables associated with all aspects of surveying within the context of MOBIS. We can assist with and perform all phases of the survey process to include: planning survey design; sampling and survey development; pretest/pilot surveying; defining and refining the agenda; survey database administration; assessing reliability and validity of data; determining proper survey data collection methodology; administering surveys using various types of data collection methods; and analyzing quantitative and qualitative survey data.

Production of reports to include, but not limited to: description and summary of results with associated graphs, charts, and tables; description of data collection and survey administration methods; discussion of sample characteristics and the representative nature of data; analysis of non-response; and briefings of results to include discussion of recommendations and potential follow-up actions.

PROJECT EXAMPLES

For a Colorado-based consumer goods manufacturer operating more than 50 plants on sev-

eral continents, E & E has created a web-based Environmental Management System to allow corporate headquarters to monitor and manage environmental, health and safety performance at all locations. The project is being done in a modular fashion. To date, five modules have been completed and are being utilized. These include: incident investigation, audit module, behavior based safety, task management, and materials management.

The Audit module addresses audits conducted at the many facilities in this corporation. The system uses a list of environmental health and safety audit questions for a variety of plant operations. The interactive web-based system allows the auditor to create the audit by choosing audit sections which automatically populate the system with audit questions. Once the audit is set-up and auditor can access and answer relevant questions while in the field. The questions are also available to plant personnel prior to the audit to allow them to prepare for the auditor visit. The system produces audit reports that describe findings, recommendations and follow-up dates. The system also provides automatic e-mail reminders for follow-up corrective actions. Example screen shots are provided in Figure 1.

CONFIDENTIAL MANUFACTURING COMPANY

HOME News My Account Administration

Audit

Audit Details Auditors Sections Questions Suggested Questions Files

Environmental

- Air Quality - US
- DOT
- Hazardous Waste - CESQG
- Water Quality - US

Health and Safety

- Electrical Safety
- Emergency Management
- Fire Protection
- Forklift Safety
- H&S General Regulatory
- H&S Policies & Procedures
- Hazard Communication (HAZCOM)
- Hazardous Materials Control
- Hot Work
- Housekeeping

Materials Management

Health and Safety

- Behavior Based Safety

Energy Tracking

Industrial Hygiene

Task Management

Training

Waste

Wastewater

CONFIDENTIAL MANUFACTURING COMPANY

HOME News My Account Administration You are

Audit

Audit Details Auditors Sections Questions Suggested Questions Files

Audit Section: select...

Question Answer: select... Search View All

☐ Answered Question ☐ Unanswered Question

Page: 1 of 117

First < Prev Next > Last

Records: 1 to 5 of 583

ID	Question	Citation	Audit Section	Answer	Finding
AQUS-2	Was the renewal permit application submitted in time?	40 CFR 70.5(a)	Air Quality - US	<input type="radio"/> Yes <input type="radio"/> No <input type="radio"/> N/A <input type="radio"/> TBD	Add Finding > Remove
AQUS-3	Was the public notified by publication in the newspaper of the renewal permit application?	40 CFR 70.4 (c); 40 CFR 70.7(h)	Air Quality - US	<input type="radio"/> Yes <input type="radio"/> No <input type="radio"/> N/A <input type="radio"/> TBD	Add Finding > Remove
AQUS-4	Was the annual compliance certification submitted in time?	40 CFR 70.5 (c); 40 CFR 70.6(c)(5)	Air Quality - US	<input type="radio"/> Yes <input type="radio"/> No <input type="radio"/> N/A <input type="radio"/> TBD	Add Finding > Remove
AQUS-5	Is the annual compliance certification, (or more frequent periods as specified in the permit) signed by a corporate official?	40 CFR 70.5 (d); 40 CFR 70.6(c)(1)	Air Quality - US	<input type="radio"/> Yes <input type="radio"/> No <input type="radio"/> N/A <input type="radio"/> TBD	Add Finding > Remove

Figure 1: Example Screen Shots of a Web-Based Environmental Management System

PROCEDURES FOR HIRING E & E USING GSA

All Ordering Activities may access E & E's services under this GSA MOBIS Contract. To obtain E & E's services, a potential client must go through a contracting office just as they would for issuing a task order under any other contract.

The streamlined ordering process is just a few simple steps.

- For task orders less than or equal to \$2,500, simply develop a SOW, choose a GSA pre-qualified contractor, and have your contracting officer issue the task order directly with E & E.
- For task orders greater than \$2,500, but less than \$1 million, again the first step is to develop the SOW. Next, the ordering activity must prepare an RFQ with the contracts office that will be managing the procurement and submit it to E & E and at least two other qualified contractors (three in total). After receipt of responses, select the firm offering the "best value" for your agency.
- If the RFQ task order is greater than \$1 million, the same steps apply as for task orders greater than \$2,500 except you must solicit an appropriate number of additional schedule contractors.

ADDITIONAL GSA CONTRACT

E & E has another professional schedule contract with GSA for environmental services. This contract can be accessed as an alternative if your SOW doesn't fall under any of the SINs listed on the previous pages. For more information contact:

- ENVIRONMENTAL SERVICES
- Contract No.: GS-10F-0160J
- Contact: Robert King at 703/522-6065 or rking@ene.com.

For additional information, visit our web site at www.ene.com.

CONTRACT PRICE LIST

ECOLOGY AND ENVIRONMENT, INC.
MOBIS – GSA FSS CONTRACT GS-10F-0455P
HOURLY LABOR RATES FOR CONTRACT PERIOD YEARS
(Rates apply to all SINS: 874-1, 874-2 and 874-3)

LABOR CATEGORIES	BASE PERIOD CONTRACT YEARS				
	YEAR 1	YEAR 2	YEAR 3	YEAR 4	YEAR 5
	August 4, 2004 to August 3, 2005	August 4, 2005 to August 3, 2006	August 4, 2006 to August 3, 2007	August 4, 2007 to August 3, 2008	August 4, 2008 to August 3, 2009
PROGRAM DIRECTOR	\$ 198.00	\$ 205.92	\$ 214.16	\$ 222.72	\$ 231.63
PROGRAM MANAGER I	148.50	154.44	160.62	167.04	173.72
PROJECT MANAGER I	128.70	133.85	139.20	144.77	150.56
PROJECT LEAD I	94.05	97.81	101.72	105.79	110.03
PROJECT SUPPORT I	44.55	46.33	48.19	50.11	52.12
SUBJECT MATTER EXPERT I	148.50	154.44	160.62	167.04	173.72
SUBJECT MATTER EXPERT II	173.25	180.18	187.39	194.88	202.68
SUBJECT MATTER EXPERT III	198.00	205.92	214.16	222.72	231.63
SUBJECT MATTER EXPERT IV	222.75	231.66	240.93	250.56	260.59
INDUSTRY CONSULTANT I	103.95	108.11	112.43	116.93	121.61
INDUSTRY CONSULTANT II	118.80	123.55	128.49	133.63	138.98
INDUSTRY CONSULTANT III	128.70	133.85	139.20	144.77	150.56
ANALYST I	69.30	72.07	74.95	77.95	81.07
ANALYST II	79.20	82.37	85.66	89.09	92.65
ANALYST III	89.10	92.66	96.37	100.23	104.23
FACILITATOR I	128.70	133.85	139.20	144.77	150.56
FACILITATOR II	148.50	154.44	160.62	167.04	173.72
SURVEY SPECIALIST I	79.20	82.37	85.66	89.09	92.65
SURVEY SPECIALIST II	89.10	92.66	96.37	100.23	104.23
TECHNICAL EDITOR I	64.35	66.92	69.60	72.38	75.28
TECHNICAL EDITOR II	89.10	92.66	96.37	100.23	104.23

* All rates include the ¾% Industrial Funding Fee (IFF).